

# **New Eglinton Streetscape & Cycle Track (Eglinton Connects) Avenue Rd to Duplex Ave**

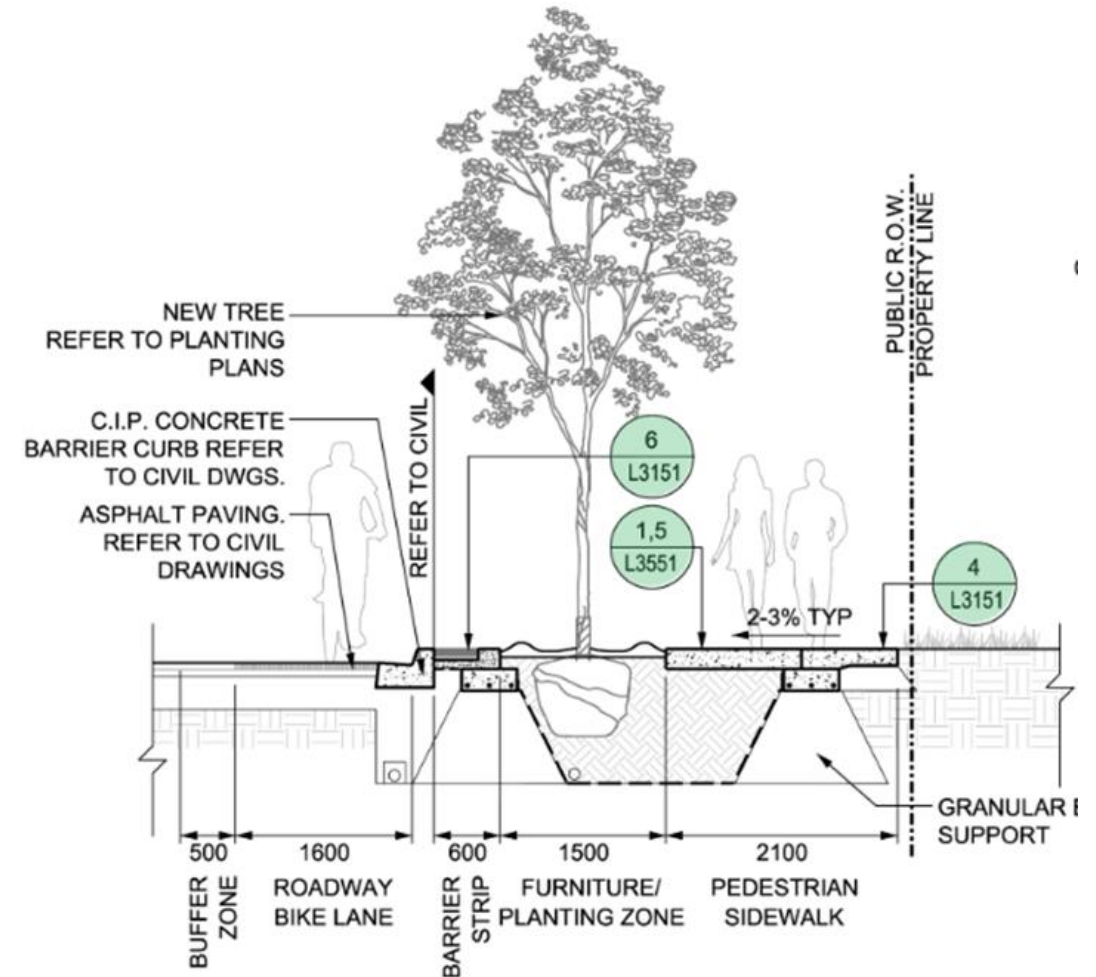
July 2, 2020

# AGENDA

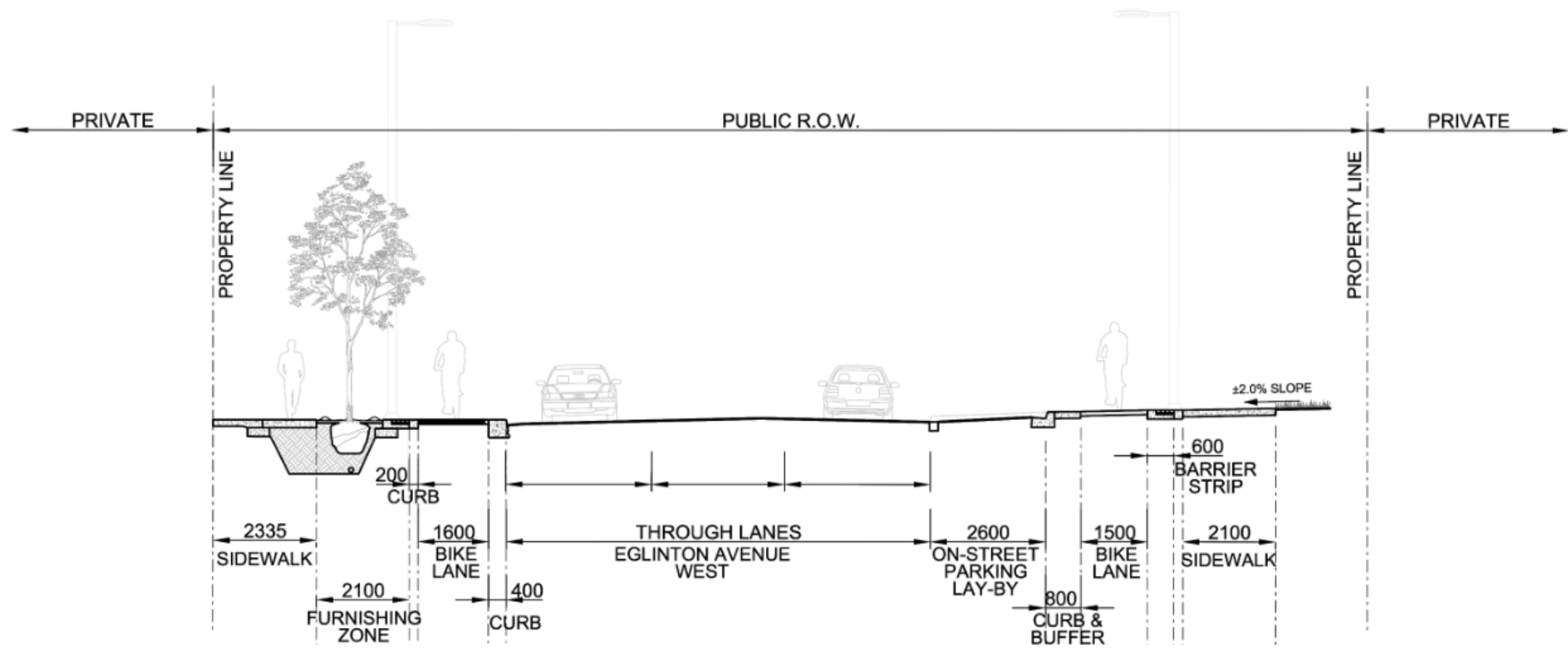
1. Eglinton Connects Streetscape and Cycle Track – Avenue Rd to Duplex Ave
2. Construction Overview
3. Traffic Configuration Stages
4. Street Furniture Removals
5. Communication and Consultation

# EGLINTON CONNECTS STREETSCAPE FEATURES - AVENUE RD TO DUPLEX AVE

- ✓ Widened sidewalks
- ✓ Separated cycle tracks
- ✓ On-street parking
- ✓ Full restoration of the roadway, curbs and sidewalks along Eglinton Ave
- ✓ Increased greenery and street furnishings
- ✓ Reduced traffic lanes (to accommodate wider sidewalks and cycle tracks)



# EGLINTON CONNECTS STREETSCAPE DRAWING - AVENUE RD TO DUPLEX AVE



# EGLINTON AVE FUTURE CONFIGURATION - ORIOLE PKWY TO LASCELLES BLVD



# EGLINTON AVE FUTURE CONFIGURATION - LASCELLES BLVD TO DUPLEX AVE



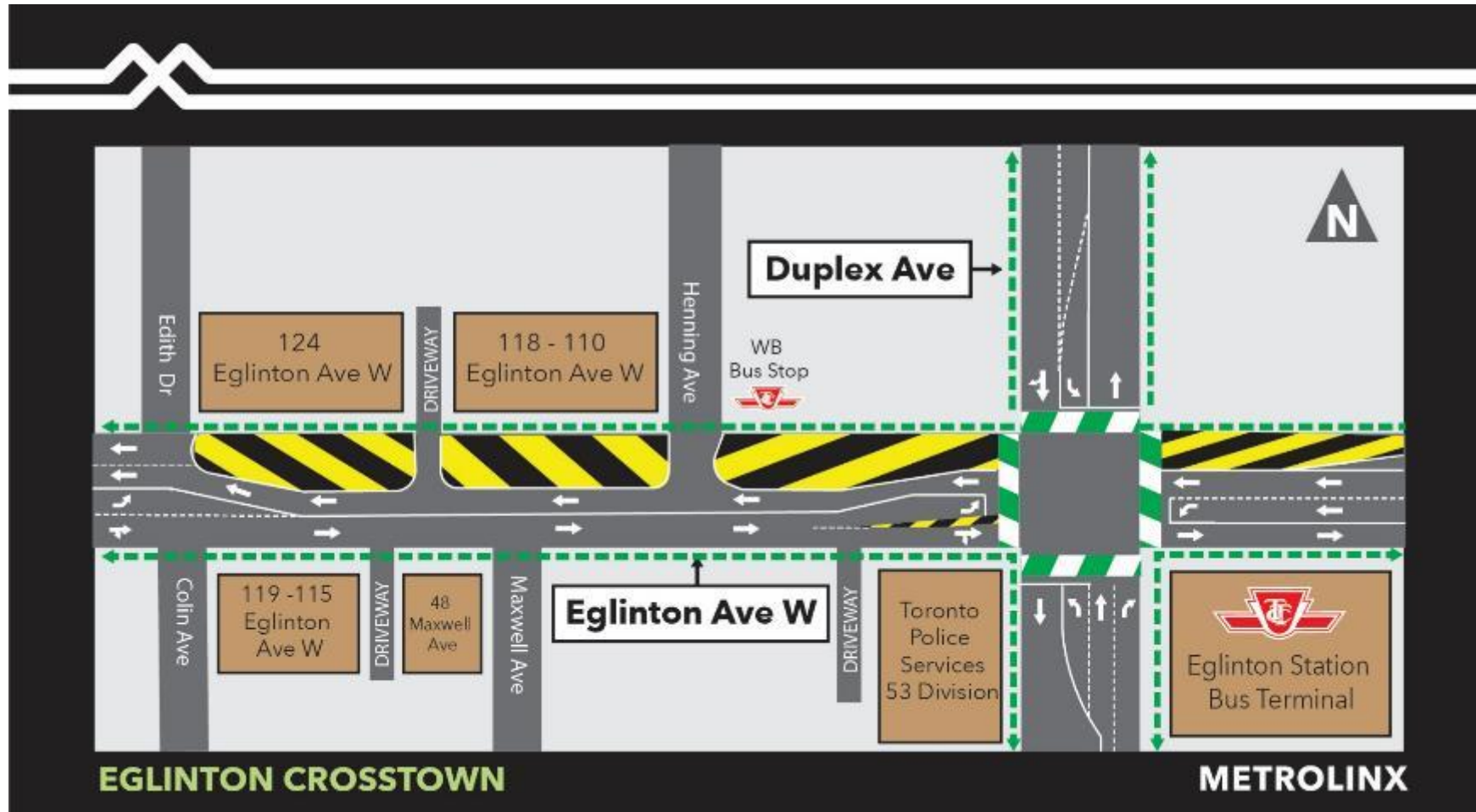
# CONSTRUCTION OVERVIEW

- Construction of the new Eglinton Streetscape and Cycle Track between Avenue Rd and Duplex Ave will take place in phases beginning with **Phase 1 Edith Rd to Duplex Ave on July 6, 2020**
- Construction will take place Monday – Saturday, 7:00 a.m. – 7:00 p.m. with periodic overnight work
- Construction activities will include excavation of the roadway and sidewalk, utility reinstatement, concrete work, paving, compaction, landscaping and installation of street furnishings
- Work will be carried out in several traffic stages with minor adjustments between stages as required
- Construction of the new Eglinton Streetscape and Cycle Track between Avenue Rd and Duplex Ave will continue into 2021



# TRAFFIC CONFIGURATION - STAGE 1

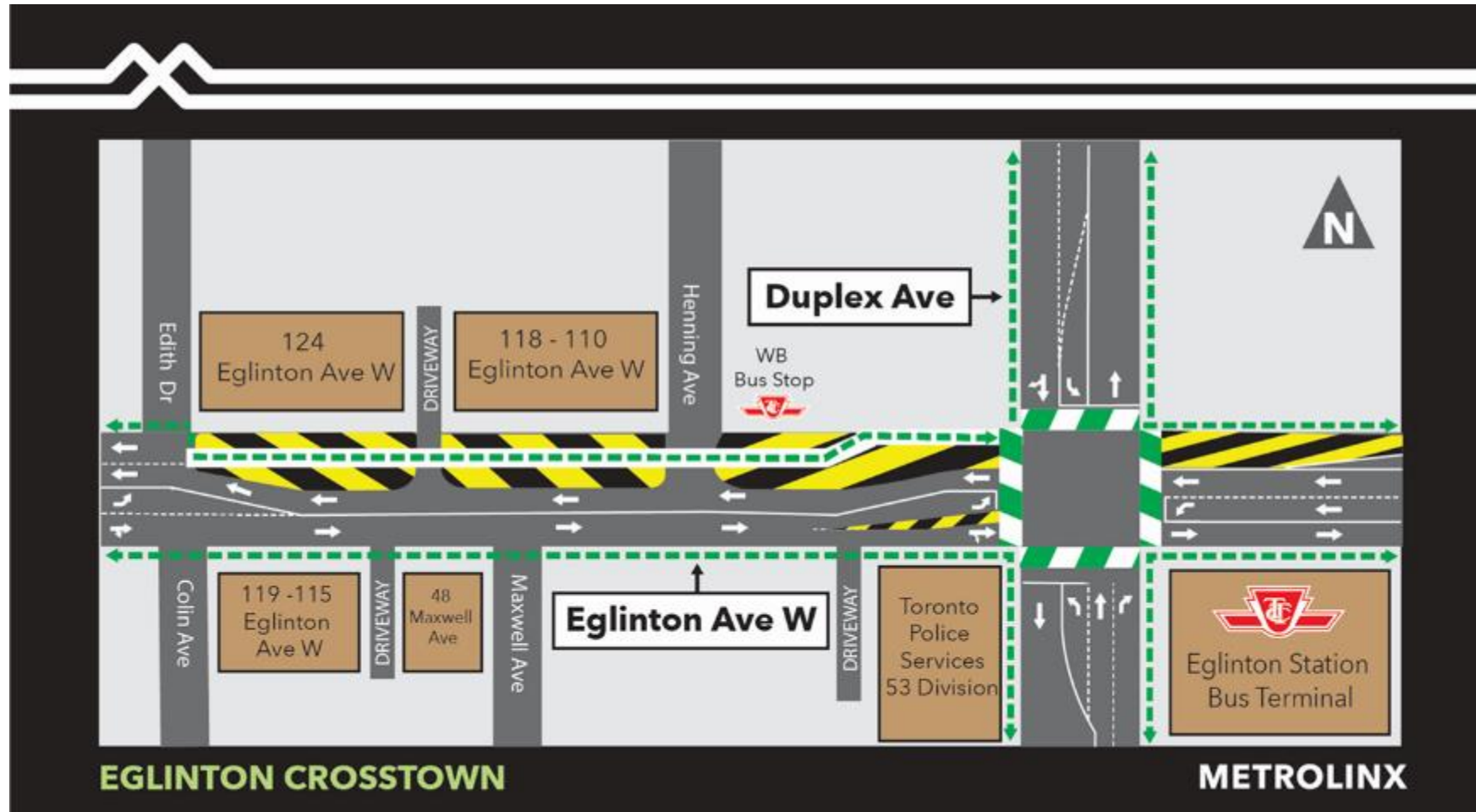
July 6, 2020 for approx. three (3) weeks





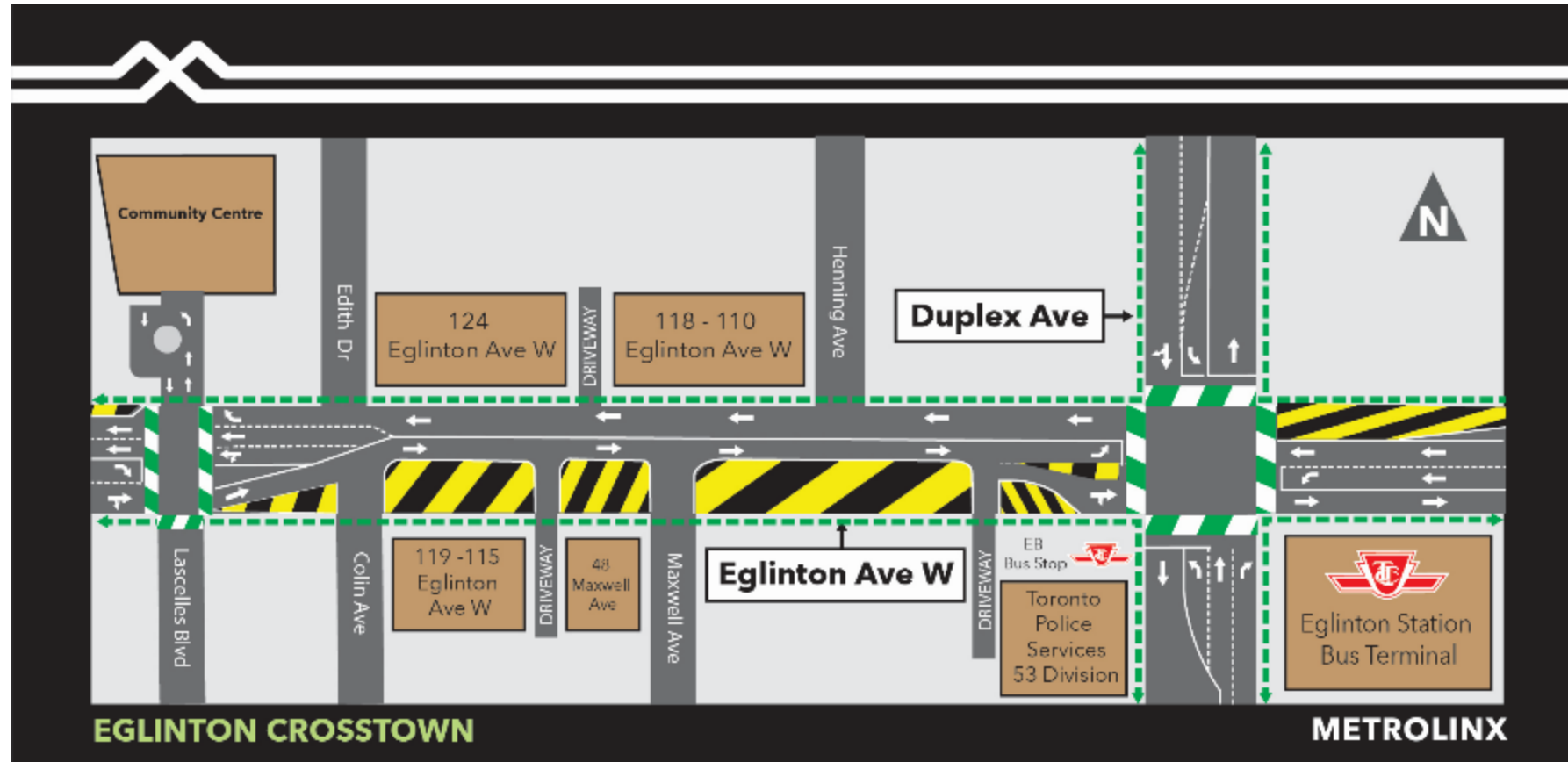
# TRAFFIC CONFIGURATION - STAGE 2

Early August for approx. three (3) weeks



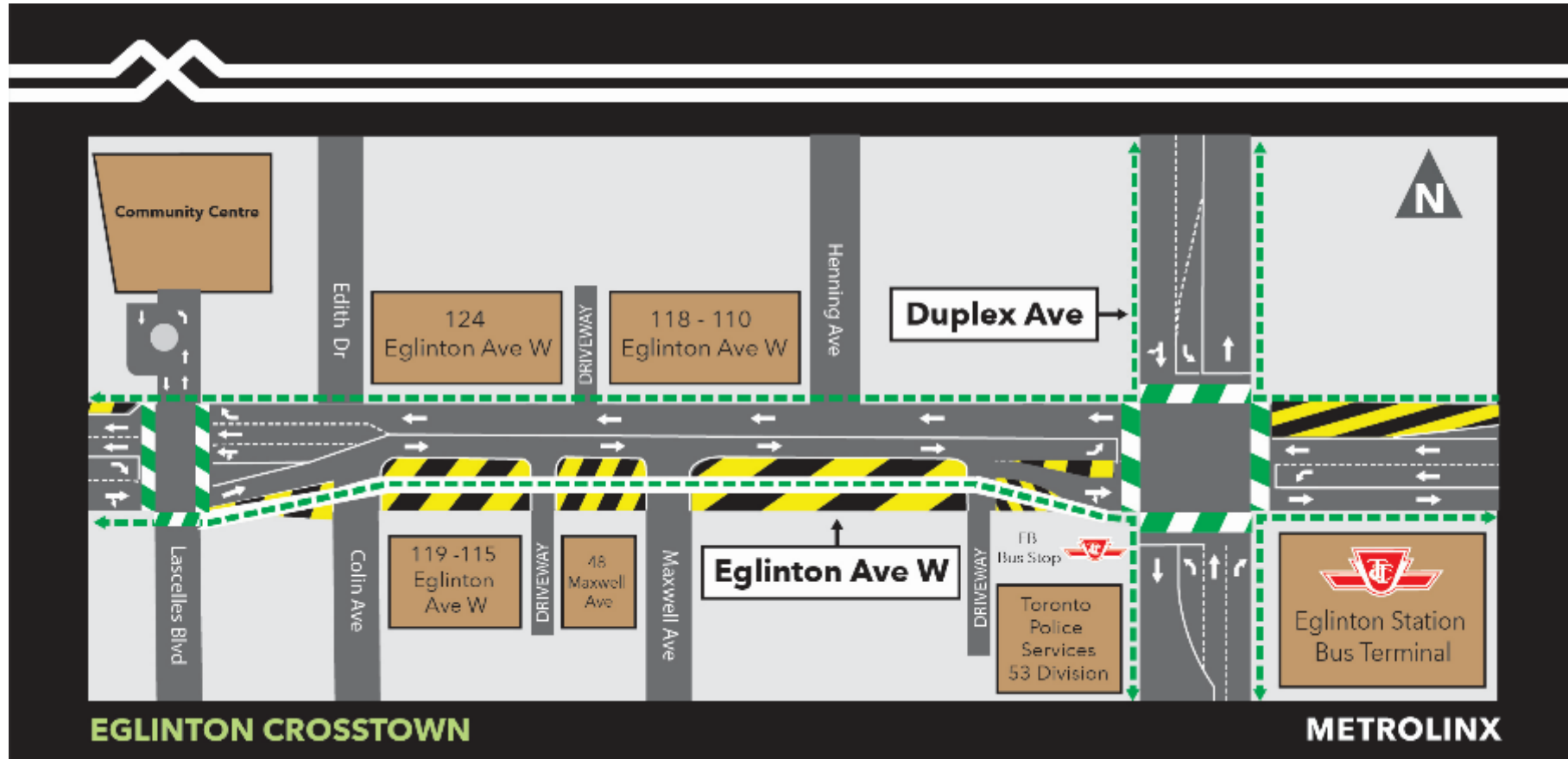
# TRAFFIC CONFIGURATION - STAGE 3

Early September for approx. three (3) weeks

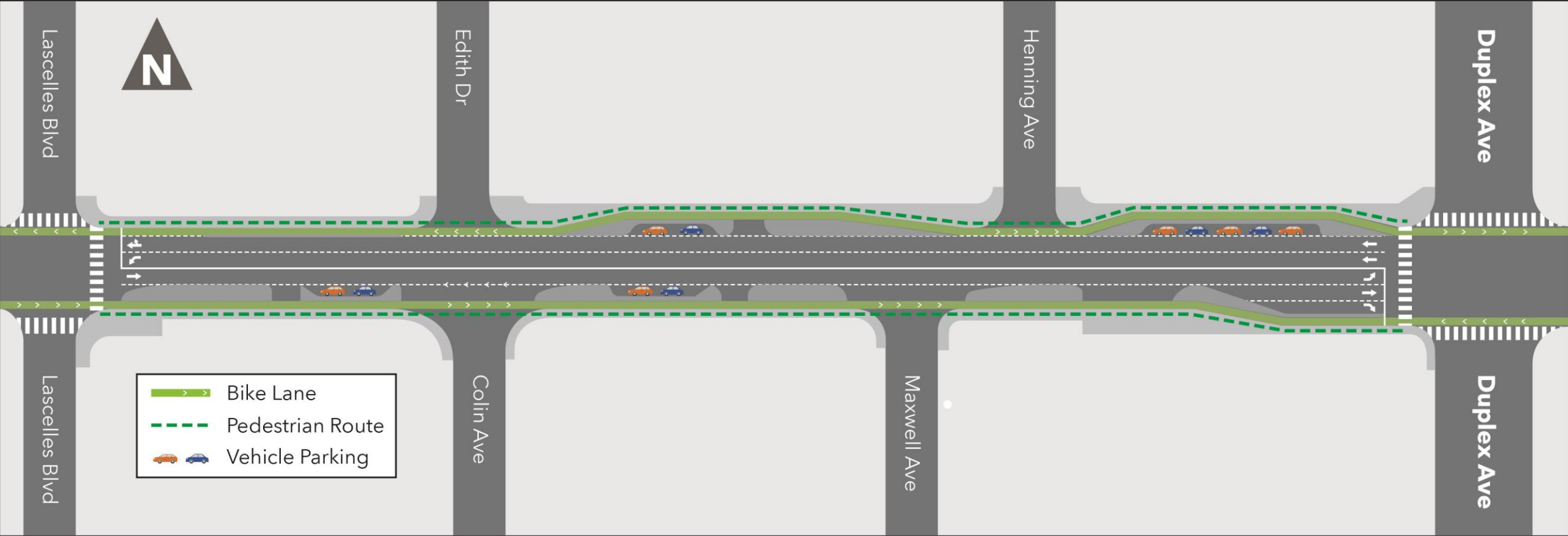


# TRAFFIC CONFIGURATION - STAGE 4

Late September for approx. three (3) weeks



# FINAL TRAFFIC CONFIGURATION - LASCELLES BLVD TO DUPLEX AVE



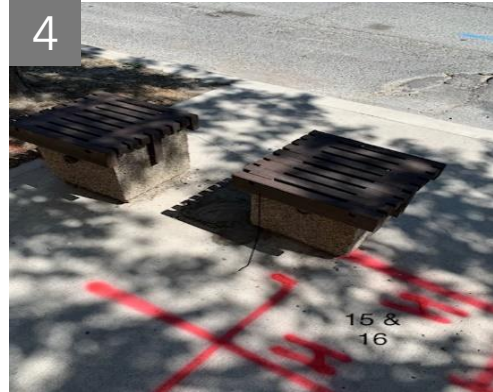
## STREET FURNITURE REMOVALS

- To facilitate construction of the new Eglinton Streetscape and Cycle Track, street furniture on Eglinton Ave between Lascelles Blvd and Duplex Ave will be removed
- Removed street furniture will be reinstated where possible
- New street furnishings will be installed as per the streetscape design
- Additional removals may be required as the construction progresses
- Notice will be provided in advance of any additional removals



# BIA FURNITURE REMOVALS

124 Eglinton Ave W:





# BIA FURNITURE REMOVALS

158 Eglinton Ave W:



174 Eglinton Ave W:



# TTC SHELTER AND STOP REMOVALS

174 Eglinton Ave W:



75 Eglinton Ave W:



- Temporary stops and ramps will be installed to maintain access for TTC riders

